

SEAMLESS

Marie France



www.lingeriemariefrance.com

Index

Outwear

Florida Body	6
Miami Body	8
London Pullover	10
Florence Pullover	12
Milano Top	14
Clessidera	16
Tokyo T-Shirt	18
Berlin Top	20
New York Top	22









Underwear

Boxer	26
Brassiere	28
String Taille basse	30
Slip Taille Basse	32
Slip Basic	34

Basic Colours

- White 
- Light Grey 
- Dark Grey 
- Light Skin 
- Beige 
- Brown 
- Black 

Trendy Colours

- Green 
- Pink 
- Viola 
- Navy Blue 
- Turquoise 
- Wine 
- Red 
- Aubergine 

Outwear



White



Dark Grey



Beige



Navy Blue



Black



FLORIDA BODY

This elegant sleeveless body is perfect worn on its own for summer look or under a blazer or a jacket...

Sizes: S/M L/XL

90% Polyamide
8% Elastane
2% Cotton



- White
- Dark Grey
- Beige
- Navy Blue
- Black



MIAMI BODY

Must Have Long-Sleeve Body with a round neckline.

Sizes: S/M L/XL

90% Polyamide
8% Elastane
2% Cotton



- | | |
|--|---|
|  White |  Dark Grey |
|  Beige |  Navy Blue |
|  Black |  Brown |



LONDON PULLOVER

A classic: Long-Sleeve silky feel with round neckline.

Sizes: S/M L/XL

92% Polyamide
8% Elastane



- | | |
|---|--|
|  White |  Brown |
|  Beige |  Light Grey |
|  Black |  Red |
|  Light Skin |  Wine |
|  Aubergine |  Dark Grey |
|  Navy Blue | |



FLORENCE PULLOVER

Long-Sleeve top with stand-up collar for a spectacular look.

Sizes: S/M L/XL

92% Polyamide
8% Elastane



- | | | | |
|--|-------|---|-----------|
|  | White |  | Dark Grey |
|  | Beige |  | Navy Blue |
|  | Black |  | Brown |
|  | Red | | |



MILANO TOP

Beautiful tank-top, convenient for every occasion.

Sizes: S/M L/XL

92% Polyamide
8% Elastane



- White
- Brown
- Navy Blue
- Viola
- Black



Clessidra

Stylish and fashionable seamless long sleeve top for an attractive and sexy look.

Sizes: S/M L/XL

92% Polyamide
8% Elastane



- White
- Dark Grey
- Beige
- Navy Blue
- Black
- Brown
- Wine



TOKYO T-SHIRT

Convenient and classy for every day and night.

Sizes: S/M L/XL

92% Polyamide
8% Elastane



- | | | | |
|--|-----------|---|------------|
|  | White |  | Light Grey |
|  | Beige |  | Navy Blue |
|  | Black |  | Brown |
|  | Aubergine |  | Viola |

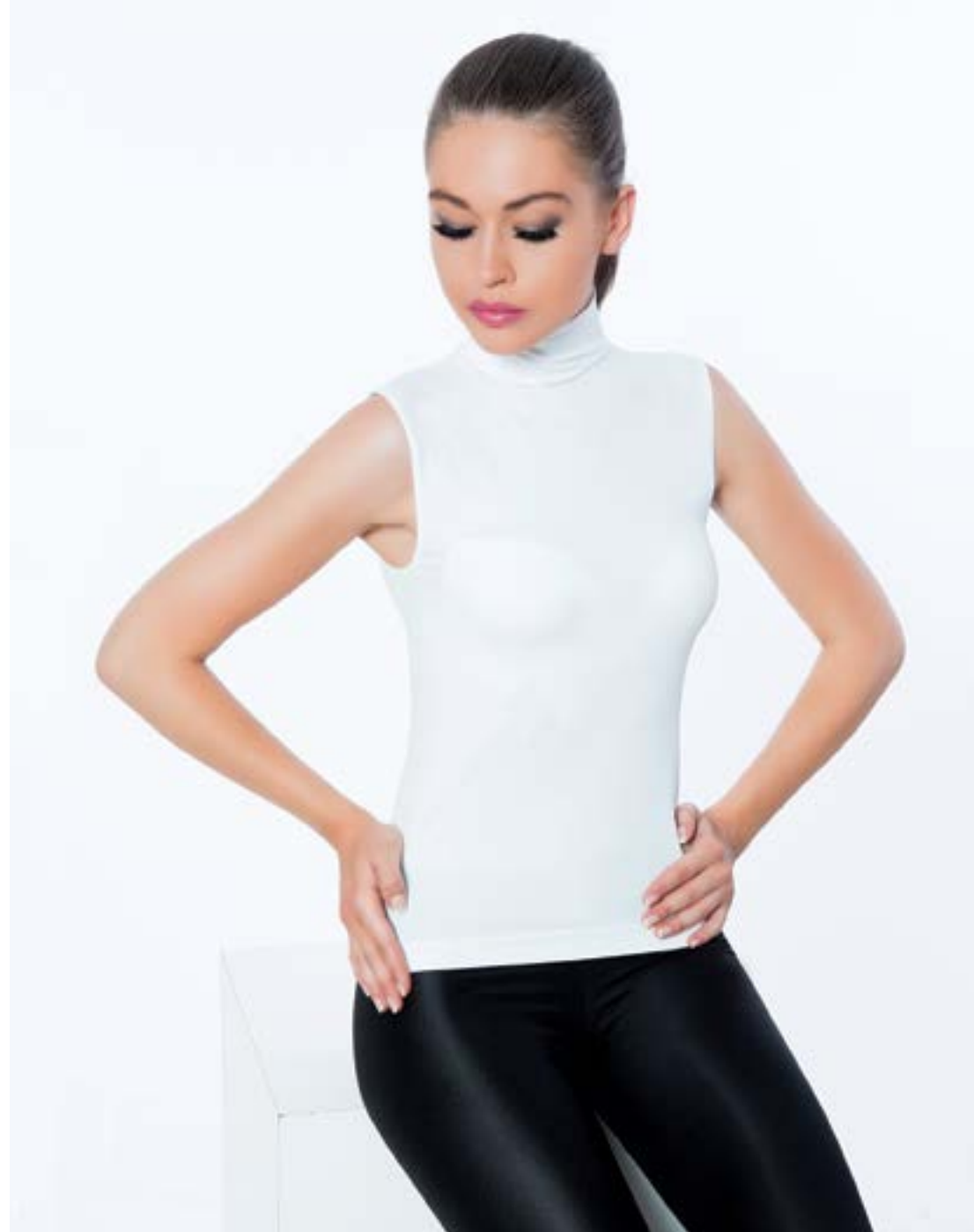


BERLIN TOP

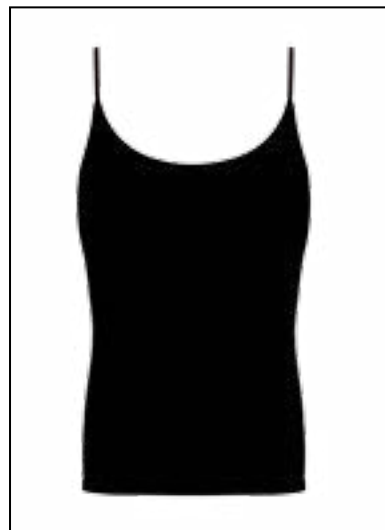
Sleeveless top with stand-up collar.

Sizes: S/M L/XL

92% Polyamide
8% Elastane



- | | |
|--|--|
|  White |  Brown |
|  Beige |  Light Grey |
|  Black |  Dark Grey |
|  Green |  Wine |
|  Pink |  Red |
|  Viola |  Aubergine |
|  Navy Blue | |



New York Top

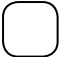





Comfortable and soft top with perfectly parallel straps.

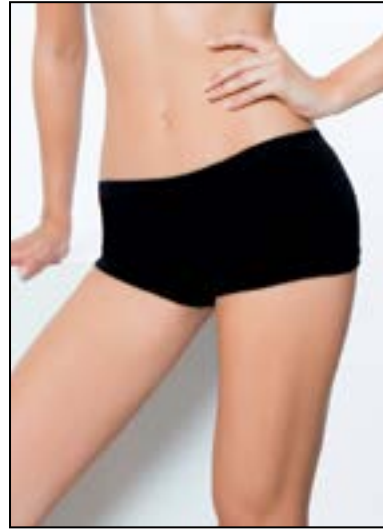
Sizes: S/M L/XL

92% Polyamide
8% Elastane



Underwear

- | | | | |
|--|-------|---|------------|
|  | White |  | Wine |
|  | Beige |  | Light Skin |
|  | Black |  | Red |



Boxer

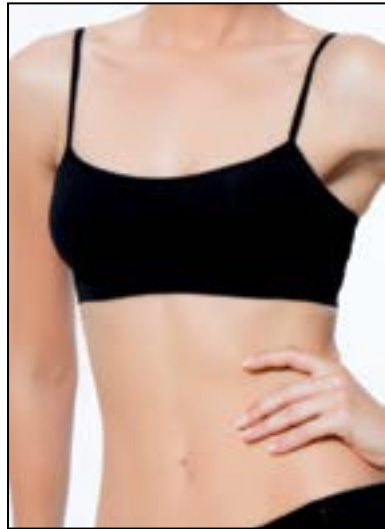
With bonded edges for a stitch-free finishing that is invisible under clothing.

Sizes: S/M L/XL

90% Polyamide
8% Elastane
2% Cotton



- White
- Beige
- Black



Brassière

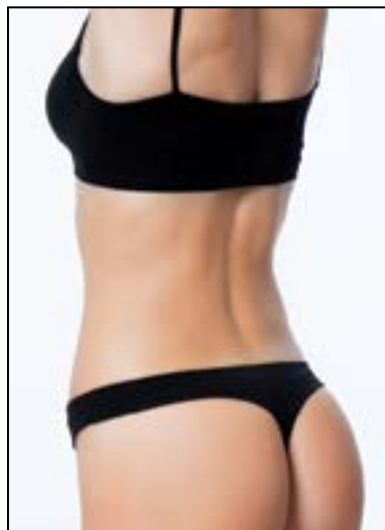
Designed to be invisible under your clothes, with no seams that might show through. Also, works perfectly for teenagers.

Sizes: S/M L/XL

90% Polyamide
8% Elastane
2% Cotton



- White
- Beige
- Black

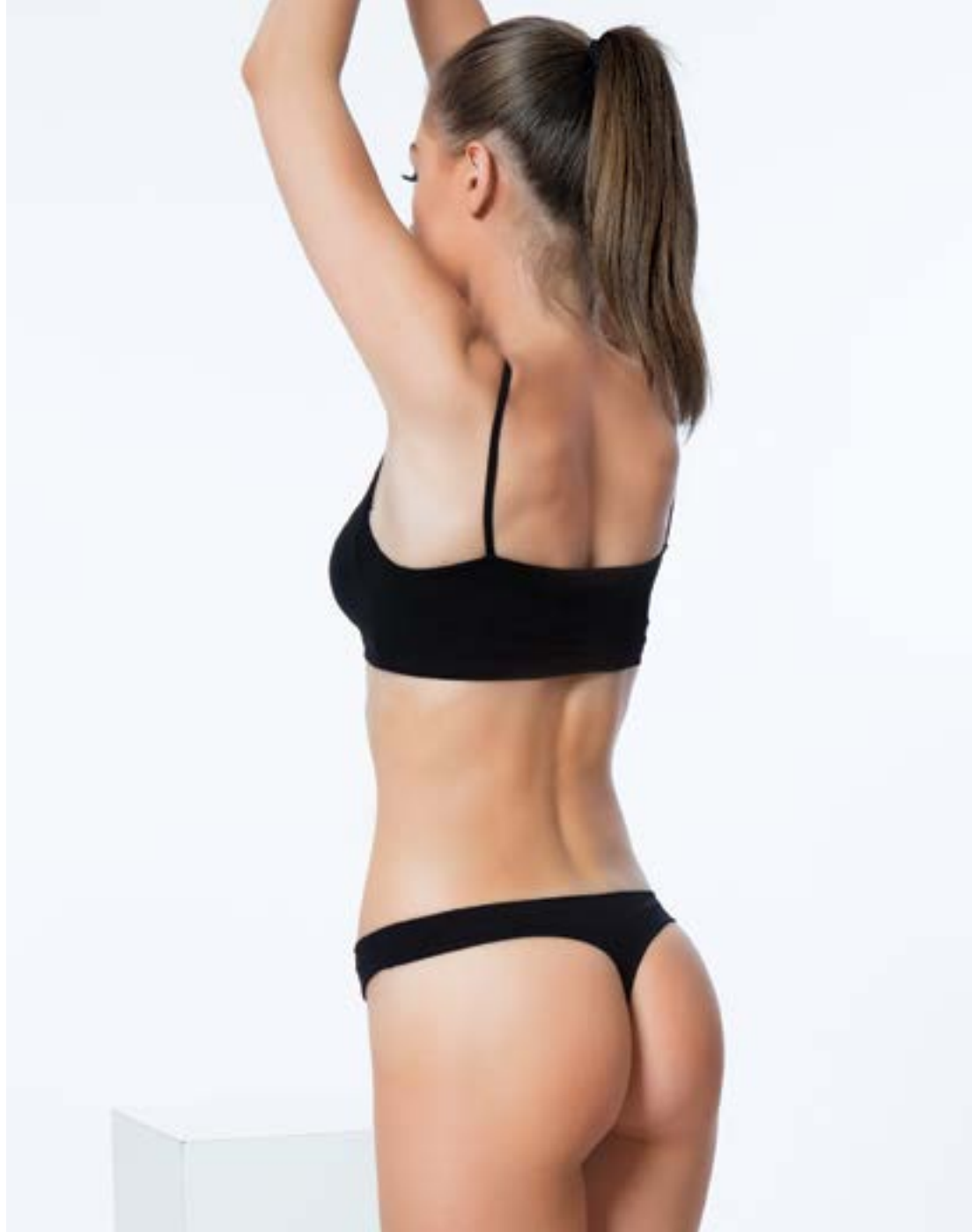


String taille basse

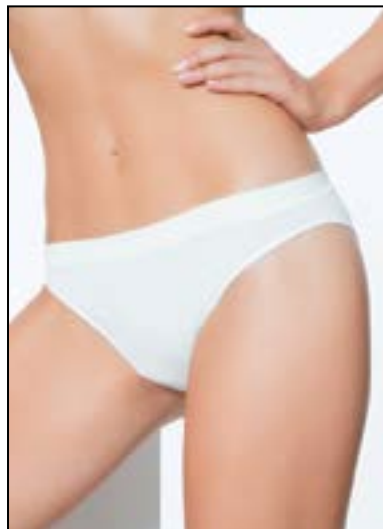
Featuring a sensitive fabric that will convince you that this is the perfect everyday panty.

Sizes: S/M L/XL

90% Polyamide
8% Elastane
2% Cotton



- White
- Beige
- Black
- Light Skin



Slip taille basse

The seductive cut not only looks gorgeous, it also feels incredibly soft on your skin.

Sizes: S/M L/XL

90% Polyamide
8% Elastane
2% Cotton



- White
- Beige
- Black
- Light Skin



Slip basic

Everyday essential in a super soft fabric for a smooth second skin feeling.

Sizes: S/M L/XL

90% Polyamide
8% Elastane
2% Cotton



SEAMLESS

Marie France

Tel +961 9 92 60 19 | Fax +961 9 92 05 42 | Mob +961 3 64 22 25

www.lingeriemariefrance.com



follow us on:

mariefrancein